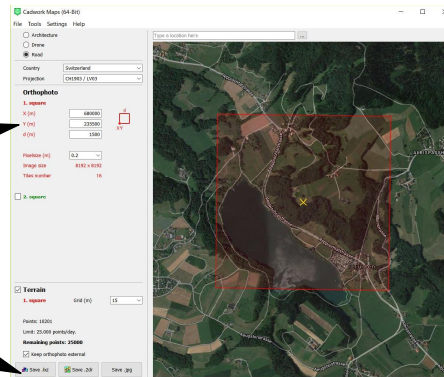


Lexocad exercise : TERRAIN tutorial 2.1

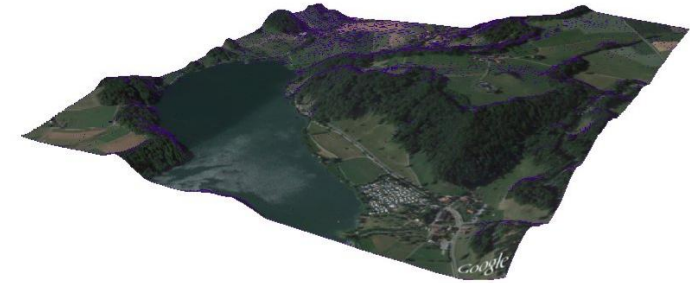
① Go in "extra" and run the function "cadwork maps"
Define, (for this exercise) the settings in the cadwork maps window

X(m) 680000
Y(m) 235500
d(m) 1500

=> save file as Maps.lxz



② The terrain is created from cadwork maps
=> Maps.lxz



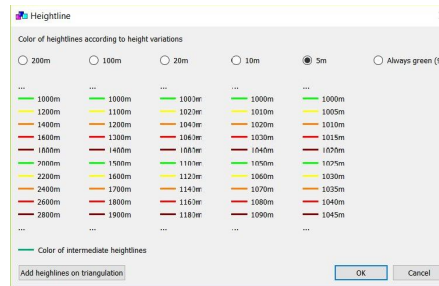
③ From Maps.lxz go on Top Viewer
Add automatic heightlines



Right click (R) on



④ Define the color according the Z gradient



Define Z interval between the heightlines

