

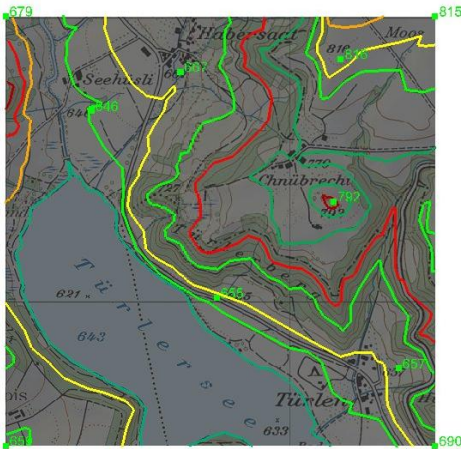
# Lexocad exercice : TERRAIN tutorial 2.2

1a) Open 2.2.lxz file  
Go on Top Viewer  
In window menu, open the orthophoto window



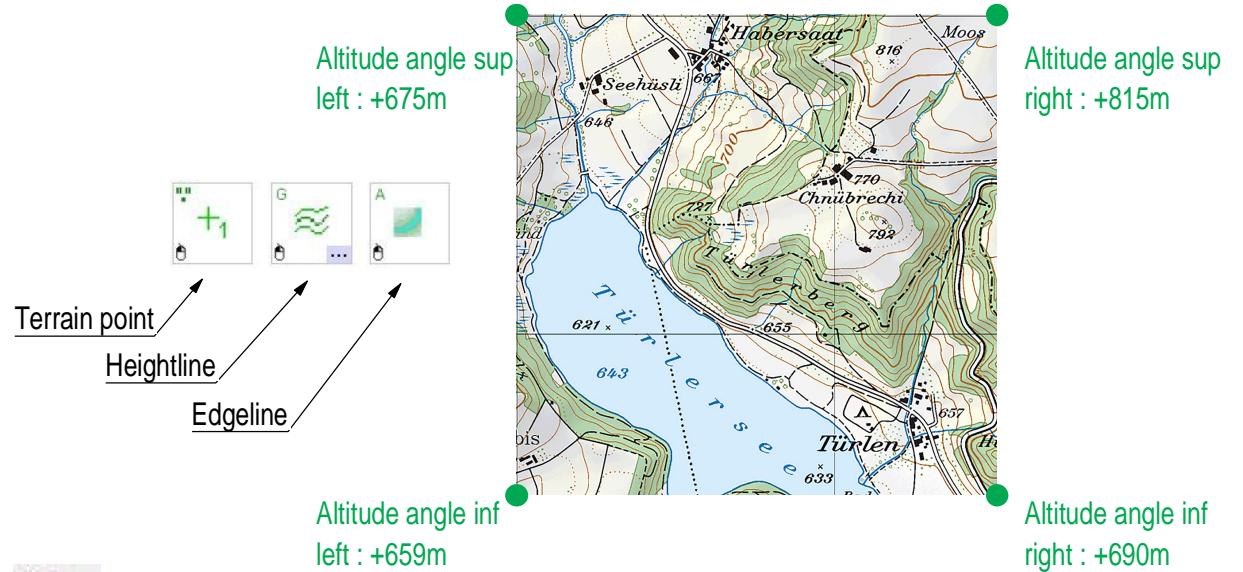
1b) In the window "orthophoto" with right click of the mouse (R) add orthophoto and choice Carto.jpg

2b) View of elements added in Top with orthophoto in grey  
- Right click (R) on orthophoto in orthophoto window and define "grey"



2a) Add heighlines, egdelines and terrain points using the definition of these elements visible on the maps

=> use the altitudes of terrain angles indicated on this pdf =>



2b) Triangulate



It is possible to add (or not) a volume during the triangulation

=> Right click (R) on triangulation icon and define the thickness of the volume

