

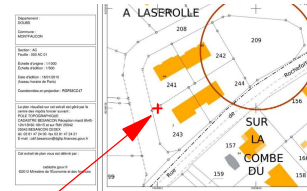
# Lexocad exercice : TERRAIN tutorial 2.3

① Open 2.3.lxz



② Go in Top view, add the file "Plan cadastre. pdf" and move it at the correct position (Scale: 1:500)  
For this use the conversion of coordinates below.  
It's concernind the reference point of the pdf  
Add a line or surface on the contour of the terrain  
+=> thisline will be used to place the 2nd pdf file

x (E) = 1933550 m	x (E) = 933385.469 m
y (N) = 6230500 m	y (N) = 6685968.963 m
France	France
RGF93-CC47	RGF93-Lambert-93



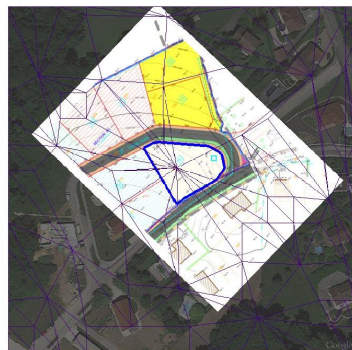
Terrain with orthophoto

Pdf "plan de cadastre"  
Transparency 60%

Line to add 2nd pdf

③a Load file "Topographie. pdf" et move it at the correct position using the line added on the 1st pdf

③b Add heightline and terrain point using the 2nd pdf in the aera of the terrain.  
=> delete the heightlines from the file 2.3.lxz which are not usable (internal of the terrain)



②b Triangulate



It is possible to add (or not) a volume during the triangulation

=> Right click (R) on triangulation icon and define the thickness of the volume

Triangulation

Make volume    20,000    Volume thickness

OK    Cancel

